

## MIMESweeper™ for Web 5.1

# Secure the web like you secure email - with full MIMESweeper content analysis protection

It's hard to imagine doing business without access to the web but, left uncontrolled, it poses an array of threats to your company: virus infections, loss of productivity, loss of confidential information etc.

You may already be aware of many of these threats, but are you protected against them?

A secure email system means little if your network is exposed to a host of threats from the Internet. To be truly secure, you need control over every byte of data received and transmitted at the SMTP and HTTP gateway.

### World's most advanced Content Security solution

MIMESweeper for Web is unique. It uses the most sophisticated content security engine available today, to offer unrivalled protection against both incoming and outgoing Internet threats.

MIMESweeper for Web is the only web security solution to include full content analysis, full HTTP compliant proxy with 4GB cache, integrated policy management plus graphical reporting tools. It is also the only product to integrate flawlessly with third-party anti-virus solutions. As an option, it can also include the MIMESweeper for Web URL Filter plug-in.

- Stops virus infection from web downloads including web-based email
- Stops surfing of inappropriate sites
- Stops illegal and unauthorized downloads
- Stops employees wasting time on the web
- Stops loss of confidential information via chat rooms, forums and web-based email

### Enabling your IT policy

MIMESweeper for Web 5.1 gives IT Managers and Network and Web Administrators the power they need to enforce even the most demanding IT policy.

Web usage policies are applied based on a combination of user profile, URL being accessed and content of the page being viewed.

For example, it may be an organization's policy that no one other than the IT department has legitimate reasons for downloading executable files - which can only be downloaded from company approved sites - or that all users can access sports or news sites, but only outside normal working hours. MIMESweeper for Web enables policies such as these to be easily implemented, putting organizations in control of web usage in the workplace.

### The Issues:

- **Security** - viruses, malicious code and spyware can be transmitted via Internet downloads
- **Productivity** - employees on average waste 30-45 minutes a day on non-business related surfing
- **Liability** - contentious downloads such as film, music and pornography can lead to litigation and loss of reputation. Companies are liable for any misuse of Internet by employees
- **Confidentiality** - uploads, use of web-based email and online chat groups can lead to loss of confidential company information and pose a real threat to intellectual property
- **Efficiency** - unauthorized web traffic wastes resources, degrades service, encourages spam and can lead to data corruption

### Product Highlights:

- The only full HTTP-compliant caching proxy with in-depth content analysis, URL filtering, AV integration, policy management and reporting
- Bi-directional analysis engine blocks incoming and outgoing content according to security policy
- Only solution to provide full content analysis on web-based email
- Only solution to analyze the exact content of uploads to chat rooms and forums
- Compatible with existing URL filters or choose the optional URL Filter plug-in
- Uses recursive decomposition to scan documents, scripts and html by actual content, not just type, name and size

## URL filtering is not enough

URL filtering relies on a database of sites categorized by site type; i.e. Shopping, pornography etc. However, with thousands of new sites launched every day, it is impossible to keep a URL database completely up-to-date. Relying solely on URL filtering leaves your IT system wide open to back door threats, rendering your IT security policy meaningless.

RISKS TO BUSINESS	HIGH	<b>VIRUS INFECTIONS</b> - Stops virus infections by analyzing file types & names - Fully integrated with AV tools to stop known viruses from being downloaded	<b>MALICIOUS CODES</b> - Stops malicious codes from entering the network by analyzing file types & names	<b>SPYWARE</b> - Stops spyware from infecting desktops by analyzing file types & names	<b>ONLINE THREATS</b>
		<b>LOSS OF BANDWIDTH</b> - Stops download of large or non-business related files (e.g. MP3, AVI, EXE, ZIP) - Stops HTML spam passing through SMTP gateway	<b>INCREASED IT COSTS</b> - Stops unnecessary increase of bandwidth - Stops unnecessary increase of storage hardware to store non-business related files	<b>IT STAFF BURDEN</b> Prevents increased burden to IT staff due by stopping viruses & other malware	<b>LOSS OF IT RESOURCES</b>
		<b>LEGAL LIABILITY</b> Stops access to pornographic & other offensivesites (e.g. racist, illegal etc.) categorized in the URL database	<b>LEGAL LIABILITY</b> - Stops illegal downloads of music and video - Stops illegal download of software - Stops access to pornographic & other offensive sites (e.g. racist, illegal etc.) <b>not categorized</b> in the URL database	<b>LOSS OF IP &amp; CONFIDENTIAL DATA</b> Prevents leak of sensitive information via web-based email, chat rooms & other forums (e.g. uploads of sales data, patient or client information, blue prints, legal information etc.)	<b>CORPORATE RISKS</b>
		<b>UNPRODUCTIVE SURFING</b> Non-business related sites categorized in the URL database are blocked (e.g. shopping, sports, gambling etc.)	<b>UNPRODUCTIVE SURFING</b> Non-business related sites <b>not categorized</b> in the URL database are allowed or blocked according to company policy (e.g. shopping, sports, gambling etc.)		<b>LOSS OF PRODUCTIVITY</b>
	LOW	Addressed by URL Filtering			

## How does it work?

### 1. Policy Identification

Transfer requests are first cross-referenced with your organization's security policy, including individual access privileges where appropriate. Alternatively, it can apply policy according to client IP address.

### 2. URL Filtering (optional)

Our URL database contains more than 8.5 million web addresses (growing on a weekly basis) that are categorized in 40 comprehensive business related categories. When a website request tallies with one of the URLs in the database, your policy is consulted and the transfer is permitted or blocked as appropriate. The URL Filter is an optional add-on that can be included as part of your MIMESweeper for Web solution.

### 3. Content Disassembly

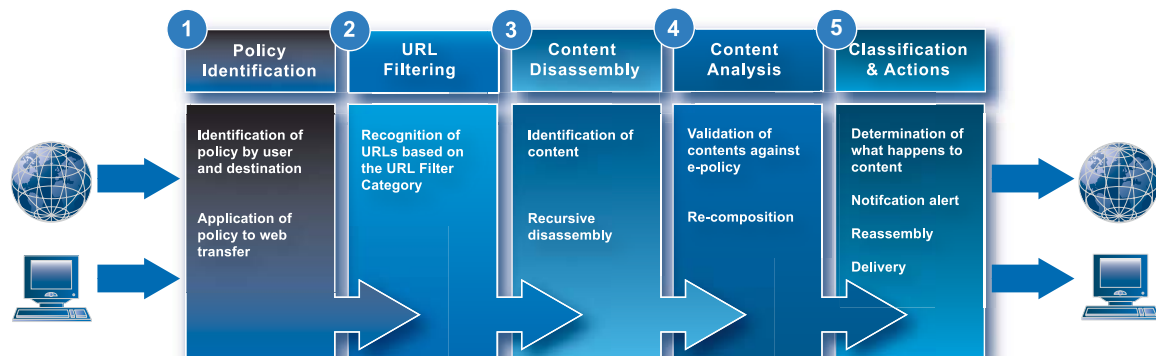
MIMESweeper for Web scans incoming and outgoing text, script, document formats (including images, sound and video), compressed files and executables. Recursive disassembly unpacks hidden and embedded data as required.

### 4. Content Analysis

HTTP and browser FTP content is analyzed and evaluated in accordance to your policy and applied to the individuals concerned. Content is checked for all known viruses using your existing anti-virus software.

### 5. Classification and Action (Delivery)

Content is passed, cleaned and passed, or blocked depending on company policy. A configurable HTML page or pop-up can inform users of any intervening action. Senior staff are notified via email alert upon request.

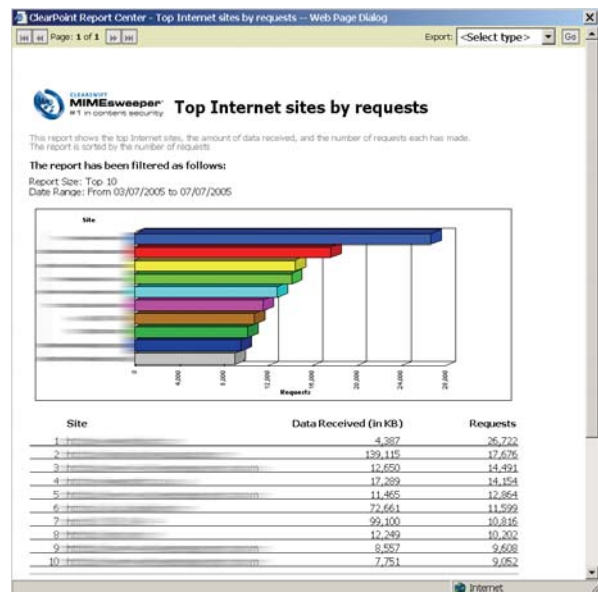


## Reporting

### Real-time reporting

Included as standard with MIMESweeper for Web, the reporting module gives you total insight into how your business interacts with the web.

MIMESweeper for Web provides pre-defined and comprehensive reports viewable by secure connection from any standard web browser. The detailed and insightful graphical reports let you map trends, understand networks, monitor traffic changes and analyse user behaviour.



**Figure 1: "Top Internet Sites by Request"**

Illustration of just one of the many reports provided by MIMESweeper for Web - this report shows the most popular sites in terms of the number of URL requests ("hits"). As is common with other MIMESweeper reports "drill-down" is supported meaning clicking on a particular site will open another report that shows the users who requested that site.

## Total Content Security

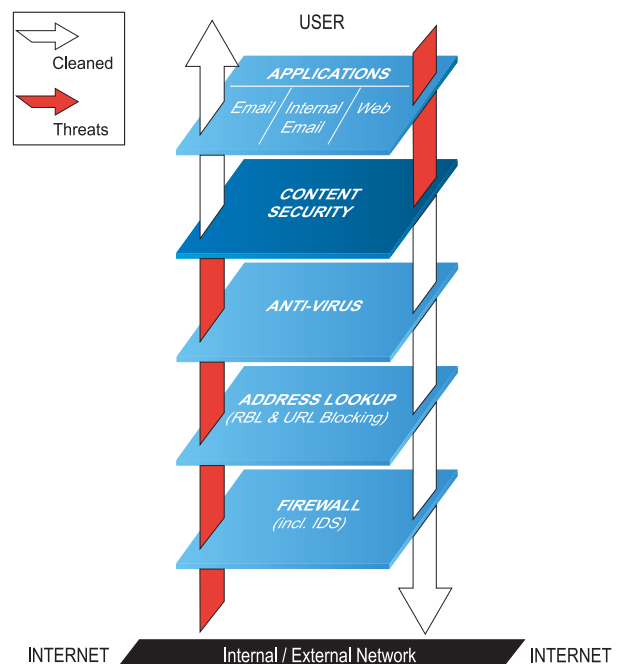
### A layered approach to Content Security

IT security solutions, such as firewalls, only address specific security issues and are likely to leave your organization vulnerable if used in isolation. Combining a firewall with a basic URL filtering solution leaves your organization vulnerable against many web based threats, as dangerous content is permitted to flow through both email and web gateways.

Clearswift believes in taking a multi-layered approach to security.

The only way to achieve complete web security is to enforce your corporate IT security policy at the HTTP gateway across three separate layers of defense.

- Entry Level**  
 Firewall - regulates traffic to prevent intrusions into the company network  
 Antivirus - software programmed to detect, alert and clean known viruses
- Basic Security**  
 URL Filtering - software designed to block access to websites deemed a threat to company security based on the type of site according to a database of categorized URLs
- Complete Security**  
 Content Analysis - software that scans HTTP content and browser FTP in real-time according to policy. Permits or denies access depending on analysis of the content found i.e. file type, text, images and embedded code.



## MIMEsweeper™ for Web 5.1

### Optional functionality

#### MIMEsweeper URL Filter

URL filtering - also known as URL blocking - is an essential component to creating a controlled environment for assured 'safe surfing'. While it cannot promise to provide 100% protection used in isolation, as part of an integrated, layered approach to web security, URL filtering makes the perfect complementary measure to content filtering.

URL filtering still has its place as a supplementary technology in a layered IT security Policy. MIMEsweeper for Web can be supplied with an optional advanced URL Filter plug-in.

The MIMEsweeper for Web URL Filter continues to provide the

most advanced URL filtering and categorization available today. The URL database has categories and content unique to Clearswift.

- Based on a database of over 8.5 million URLs and growing
- Providing 40 comprehensive categories
- Customizable to your IT security policy
- Scalable to network, work group or individual
- Automatically updates every day

### Web security check

Uncover the vulnerabilities in your company's defenses with the Clearswift Threat Assessment Suite. The Threat Assessment Suite is a **FREE** service provided by Clearswift, designed to assess the effectiveness of your current web security measures. The Web Threat Assessment Suite simulates more than 30 menaces to demonstrate the potential threats that can penetrate an organization's defenses through an employee's browser.

**Take the test now! Visit [www.clearswift.com/threattest](http://www.clearswift.com/threattest)**

### About Clearswift

Clearswift simplifies content security. Our products help organizations enforce best-practice email and web use, ensuring all traffic complies with internal policy and external regulations. Our range of content filtering solutions makes it easy to deploy, manage and maintain no-compromise email and web security for both inbound and outbound traffic.

Clearswift is the only vendor to offer comprehensive, policy-based content security in all three deployment methods: as software, as an appliance and as a managed service. All three platforms are designed to take the hassle out of securing internet traffic, with a clear, intuitive management interface; automatic, 'zero-touch' updates; powerful reporting and common-sense policy management.

Twenty years of experience across 15,000 organizations has helped us raise security standards while simplifying security management at the same time. We've helped many of the world's most successful organizations use the internet with confidence and are committed to staying ahead of the market and helping our customers defend against all emerging threats.

### Contact Clearswift

#### United States

100 Marine Parkway, Suite 550  
Redwood City, CA 94065  
Tel: +1 800 982 6109 | Fax: +1 888-888-6884

#### United Kingdom

1310 Waterside, Arlington Business Park, Theale,  
Reading, Berkshire, RG7 4SA  
Tel: +44 (0) 11 8903 8903 | Fax: +44 (0) 11 8903 9000

#### Germany

Amsinckstrasse 67, 20097 Hamburg  
Tel: +49 40 23 999 0 | Fax: +49 40 23 999 100

#### Australia

Ground Floor, 165 Walker Street, North Sydney,  
New South Wales, 2060  
Tel: +61 2 9424 1200 | Fax: +61 2 9424 1201

#### Japan

Hanai Bldg. 7F, 1-2-9, Shiba Kouen Minato-ku  
Tokyo 105-0011  
Tel: +81 (3) 5777 2248 | Fax: +81 (3) 5777 2249

MIMEsweeper™ Email Managed Service

MIMEsweeper™ SMTP Appliance

MIMEsweeper™ for SMTP

MIMEsweeper™ for Web

MIMEsweeper™ for Exchange

MIMEsweeper™ for Domino

e-Sweeper™

Bastion™

DeepSecure™